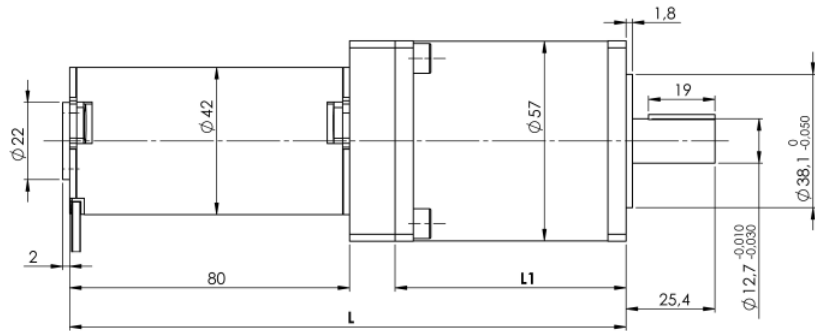
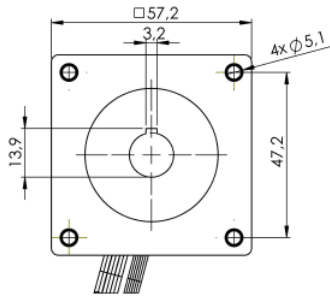


RATIO	ETAPAS/STAGES	L	L1
10	1	147	54
25	2	151,5	66
50	2	159	66
100	2	159	79
125	3	164,5	79
250	3	172	79
500	3	172	79
1000	3	172	79



TECHNICAL CHARACTERISTICS

High endurance planetary gearbox for heavy duty continuous workload in any position, at room temperature from -20 to 65°C, with **torque load up to 35 Nm, steady load.**


- **Box.** Steel box. Frontal mounting by four $\varnothing 5,1$ holes.
- **Gear set.** Hardened steel gears guaranteeing an excellent lifetime.
- **Output shaft.** $\varnothing 12,7$ mm. Stainless steel shaft, 25 mm usable length, with a standar keyway
- **Output shaft load:**
 - Axial direction, pull or push 490N.
 - Radial direction, at 5 mm from box 560N.

MOTOR COUPLING:

- **Direct C:** BG42x30 type 24 V

■ OPTIONAL:

Your special requests are welcome.

			MOTORES DE C.C. SIN ESCOBILLAS DC BRUSHLESS MOTORS Dunker BG42x30		
			BG42x30 24V		
Reducción Ratio i = X:1	Nº Etapas Stages	Eficiencia Efficiency	No load speed Vo (r.p.m.)	Nominal Speed Vn (r.p.m.)	Nominal Torque (N.m)
10	1	0,85	411,00	358,00	1,45
25	2	0,72	164,40	143,20	3,09
50	2	0,72	82,20	71,60	6,18
125	3	0,61	32,88	28,64	13,13
250	3	0,61	16,44	14,32	26,25

NO LOAD SPEED / RATED TORQUE

Motor BG42x30= 4110 rpm / 0,172 Nm

GEARBOX TIPS:

Noise: noise level depends on load symmetry, location (avoid acoustic resonance), and rotation speed; the lower the speed on the input shaft (motor), the lower the noise.