

DESCRIPTION

The high air flow and low air turbulence bring low noise level and optimal efficiency.

Galvanized steel plate framework.

Hard aluminium tubular configuration case rotor, drove by G series single-phase asynchronous motor, prepared for continuous S1 duty in a dust-free environment at room temperature from 0° up to 40°C, maintenance-free.

The rotor, at one end, is directly mounted on the motor shaft by a semi-elastic coupling, and at the other one, incorporates a hardened shaft. It turns on a self-lubricating bearing with big oil reserve, mounted on an elastic support attached to framework.

Standard operating voltage: 230 V - 50 Hz.

■ OPTIONAL:

- 'CVT' convector version which incorporates two serial connected resistances, with an intermediate point and safety thermostat. Power 1 + 1 kW at 230 V.
- Two fan elements (2VT or 2CVT), with motor located in the middle.
- Other operating voltages, 50 or 60 Hz, to be specified.
- 'PT' thermal protector up to 110°C.

TYPES AND TECHNICAL CHARACTERISTICS

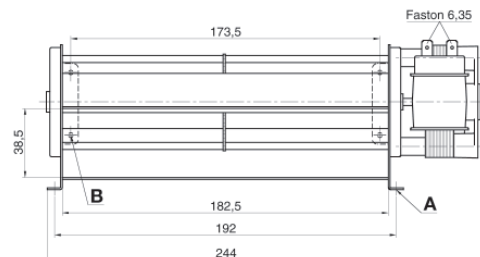
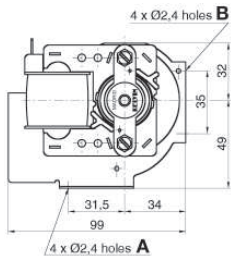
Measurements obtained according to AMCA-STANDARD 210-74 specification.

TYPE	Flow		Pressure		Exit nozzle			Rotor		Motor G series	Weight kg	Dimensions Fig.
	m ³ /h	l/s	mmH ₂ O	Pa	38,5 x 182,5	43 x 189	43 x 242	Ø53	Ø60			
One fan element												
VT 5-16	120	33,3	2,4	23,53	•			•		416	0,95	A
VT 619-16	135	37,5	3,25	31,87		•		•		416	1,17	B
VT 619-20	200	55,6	4,9	48,7		•		•		620	1,53	B
VT 624-20	220	61,1	3,6	35,3			•	•		620	1,53	B
Two fan elements												
2VT 5-16	215	59,7	1,9	18,63	••			•		416	1,57	C
2VT 619-20	250	69,4	3,1	30,4		••	••	•		620	2,09	D
2VT 624-40	320	88,9	1,7	16,67				•		640	2,9	D
Convector					Nozzle							
CVT 5-16	82	23,6	2,5	24,5	38,5 x 182,5			•		416	0,9	E
CVT 619-16	125	35,9	3,1	30,5	38 x 189			•		416	1,27	F

FIGURES AND DIMENSIONS

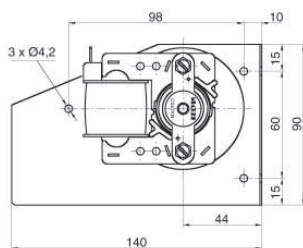
A

Type
VT 5-16



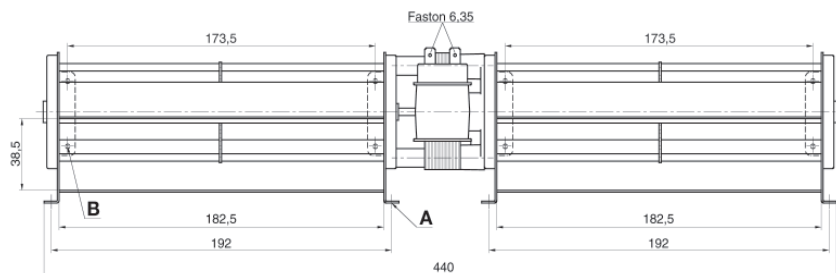
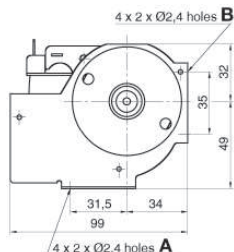
B

Type	T	F	L
VT 619-16	189	201	260
VT 619-20	189	201	264
VT 624-20	242	254	313



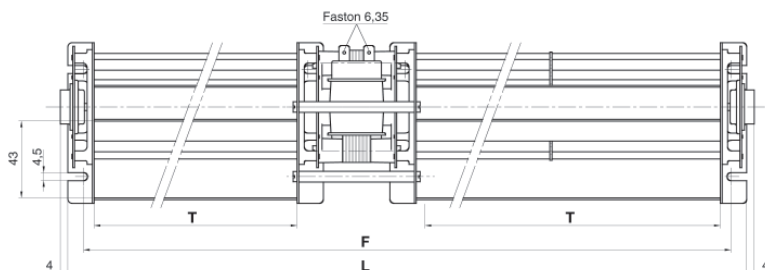
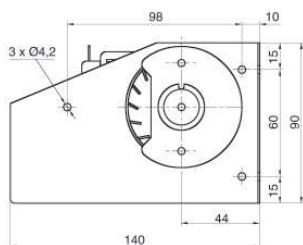
C

Type
2VT 5-16



D

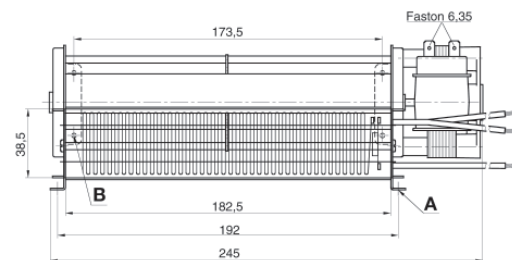
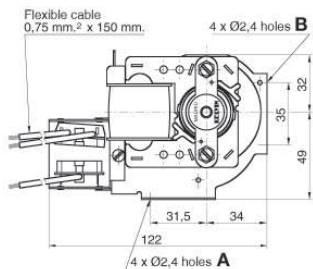
Type	T	F	L
2VT 619-20	189	462	480
2VT 614-40	242	590	607



E

Convector

Type
CVT 5-16



F

Convector

Type
CVT 619-16

